



6 Sherbourne Court, Maidenhead, SL6 2RS
£270,000 Leasehold

A chain free first floor 2 bedroom apartment on this gated development a few minutes walk from the Elizabeth Line station and Maidenhead town centre. The property offers well proportioned accommodation with residents off street parking and communal gardens.

Security Entryphone System

Door giving access to stairs rising to first floor landing. Front door to:

Entrance Hall

Storage cupboard housing pressurized hot water tank.

Bathroom

Comprising white suite of close coupled WC, pedestal wash basin with mirror over, tiled panelled bath with hand held shower attachment,

Bedroom 1

Built in wardrobe.

Bedroom 2

Built in wardrobe.

Kitchen

Comprising range of wall and base cupboards and drawers, work surfaces incorporating one and a half bowl sink, tiled splashback, space for fridge, freezer and washing machine, integrated oven with electric hob, extractor fan.

Sitting /Dining room

Juliette balcony, space for dining table.

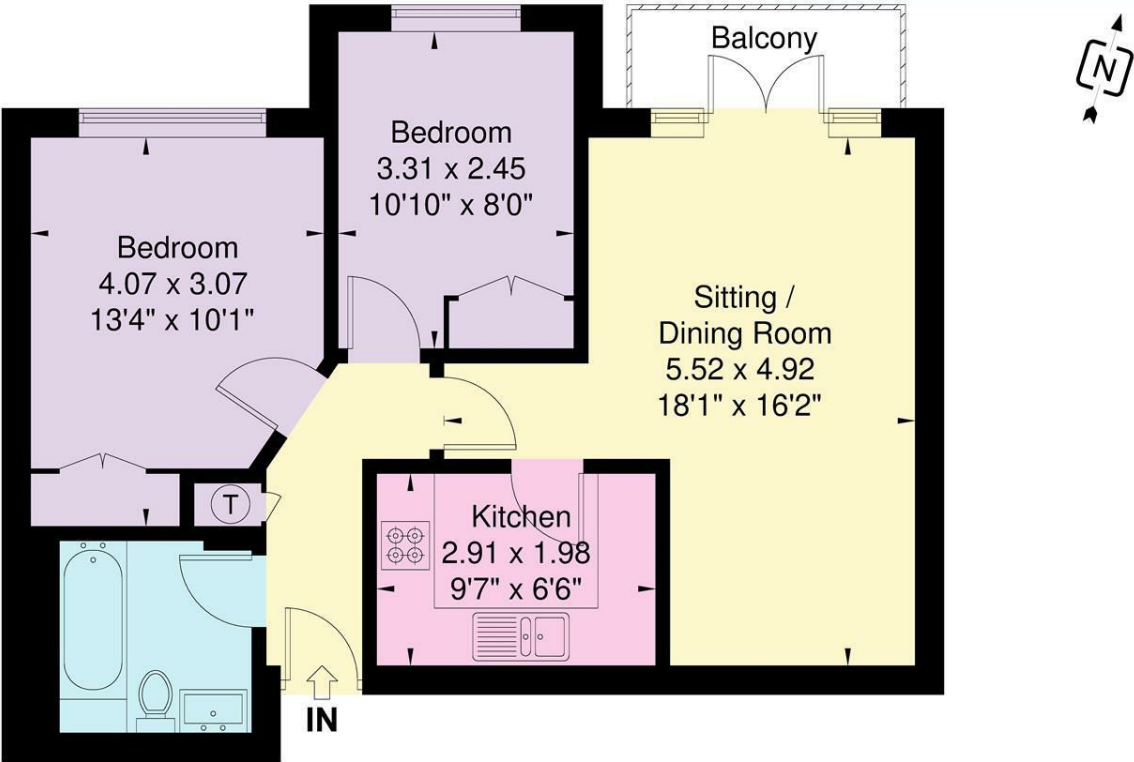
Outside

Gated development with resident parking, well kept communal gardens.

Floor Plan

Approximate Floor Area = 54.9 sq m / 590 sq ft

Sheborne Court



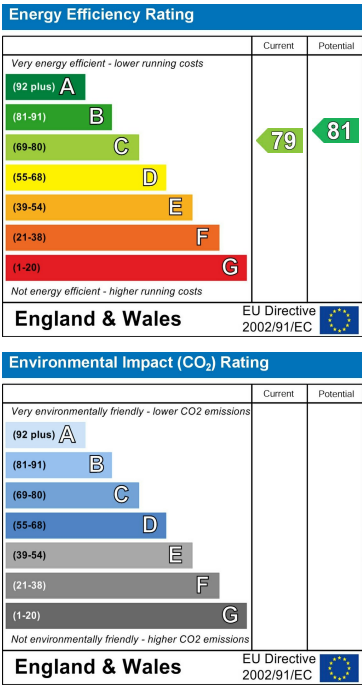
First Floor

Illustration for identification purposes only, measurements are approximate, not to scale.

Area Map



Energy Efficiency Graph



These particulars, whilst believed to be accurate are set out as a general outline only for guidance and do not constitute any part of an offer or contract. Intending purchasers should not rely on them as statements of representation of fact, but must satisfy themselves by inspection or otherwise as to their accuracy. No person in this firms employment has the authority to make or give any representation or warranty in respect of the property.